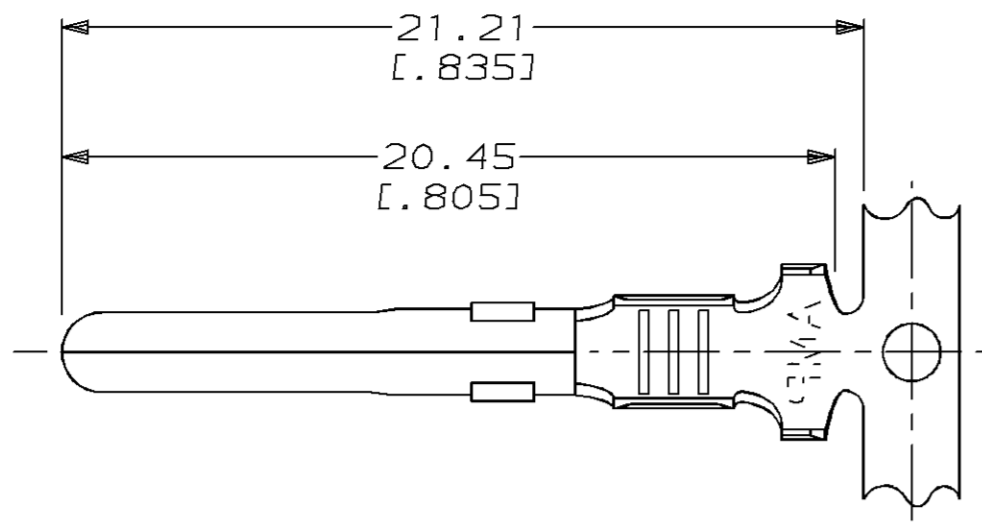
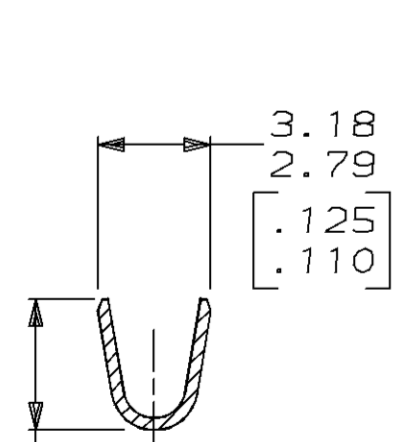
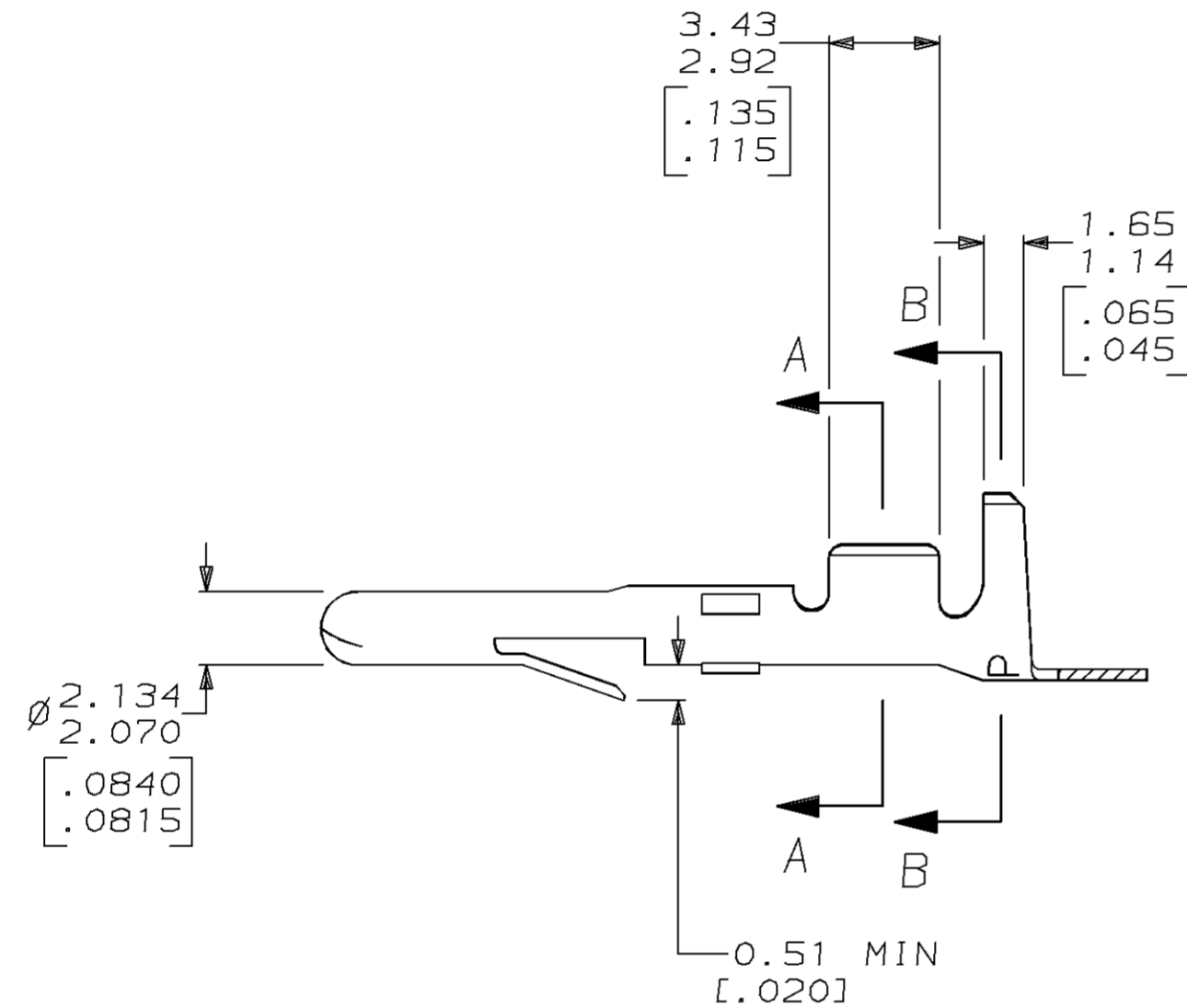


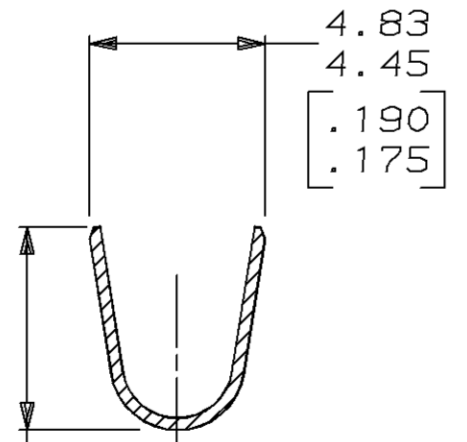
LOC	DIST	P	F	ZONE	LTR	DESCRIPTION	DATE	APPD
CM	53				L	REV PER EC 0730-0245-95	1-25-95	JH RS



1. WIRE RANGE: 2 WIRES OF 0.8 - 0.9 mm² [18 AWG] OR 1 WIRE OF 0.8 - 0.9 mm² [18 AWG] AND 1 WIRE OF 1.25 - 1.4 mm² [16 AWG].
2. INSULATION RANGE: 2 WIRES OF 2.92 [.115] MAX DIA EACH, STACKED.
3. DIMENSIONS IN BRACKETS ARE IN INCHES.



3.48 REF [.137]
SECTION A-A



5.38 REF [.212]
SECTION B-B

METRIC

THIS DRAWING IS A CONTROLLED DOCUMENT FOR AMP INCORPORATED. IT IS SUBJECT TO CHANGE AND THE CONTROLLING ENGINEERING ORGANIZATION SHOULD BE CONTACTED FOR THE LATEST REVISION.

PRE-TIN	0.30 [.012] PH BRZ	350558-4
PRE-TIN	0.30 [.012] BRASS	350558-1
FINISH	MATERIAL	PART NO

DO NOT SCALE PRINT. UNLESS SPECIFIED DIMENSIONS IN mm [INCHES] TOLERANCES ON : 2 PLC DEC ± - 3 PLC DEC ± 0.13 [.005] ANGLES ± -	DR 1-20-93 T. BECK CHK 1-20-93 R. SWING APPD 1-25-93 C. MARTIN	AMP AMP Incorporated Harrisburg, PA 17105-3608 NAME PIN, MATE-N-LOK™		
MATERIAL SEE TABLE	APPD 1-25-93 C. MARTIN PRODUCT SPEC -			
FINISH SEE TABLE	APPLICATION SPEC -	SIZE C	CAGE CODE 00779	DRAWING NO G=350558
WEIGHT -	SCALE 5:1	SHEET 1 OF 1		

CUSTOMER DRAWING